

## EhCache Configuration Code Gen

### Summary

The“ Ehcache Configuration” can be easily prepared by using Code Generation.

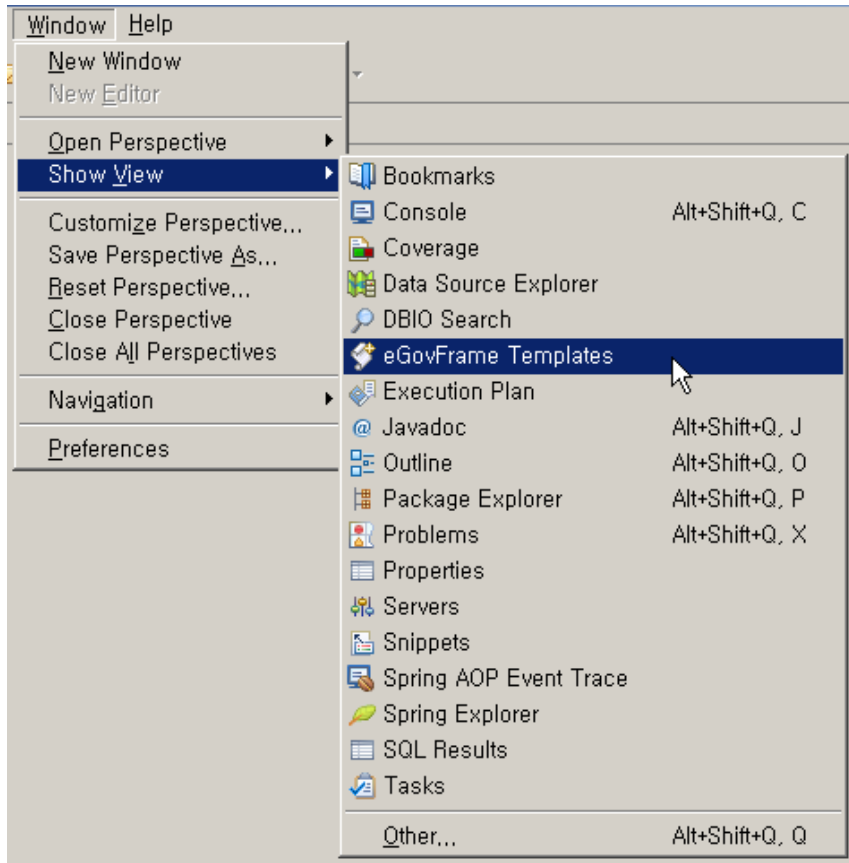
### Description

For description on eGovFrame EhCache Configuration, refer to the following execution environment guide.

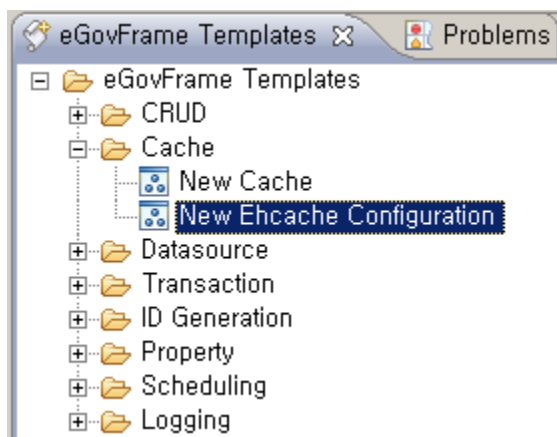
- [Execution Environment Cache Configuration Guide](#)

### Manual

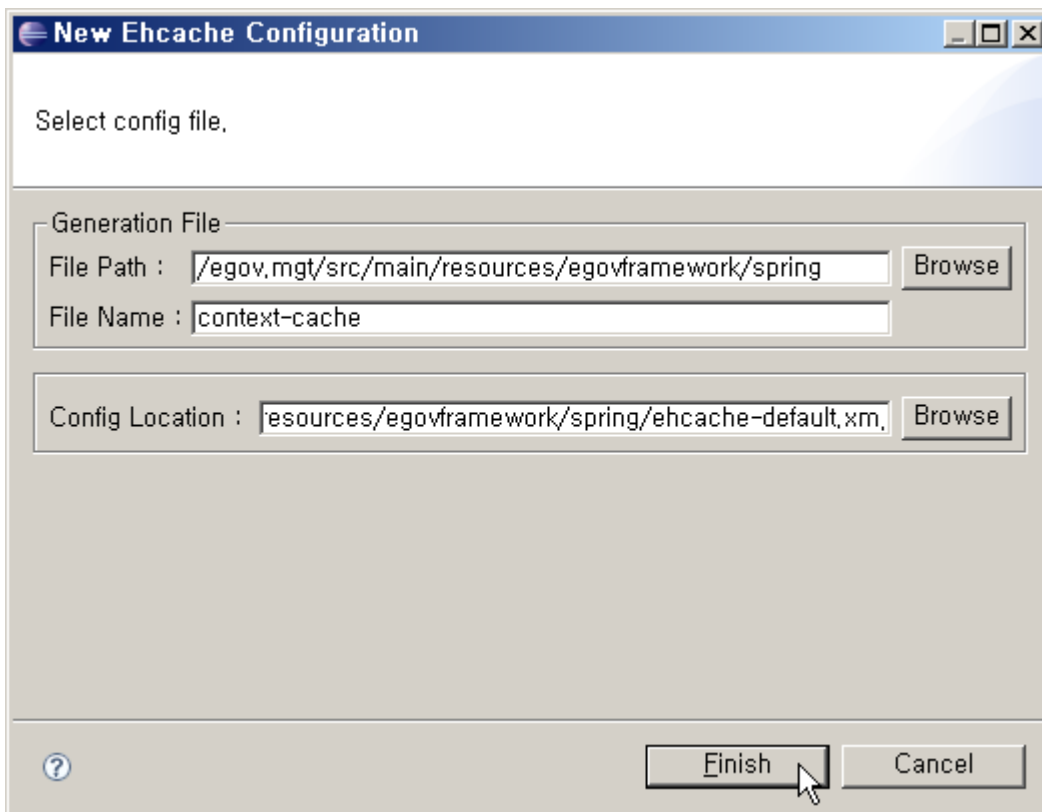
1. Show Template : Select Window>Show View>eGovFrame Templates.



2. Select the template of configuration to prepare.



3. On the screen UI, enter the needed items and click Finish button.



4. Check the created configuration file.

